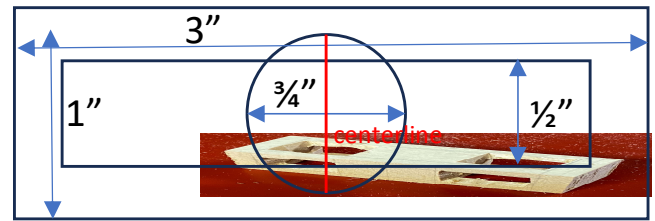
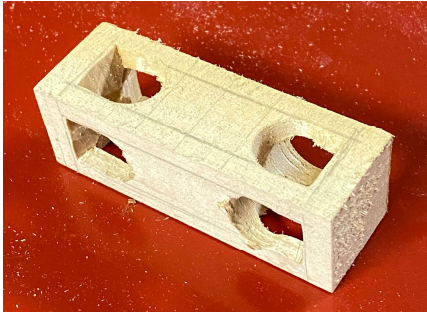


1. Your blank is 1"x1"x3" basswood with 4 1/2" holes drilled thru two sides of each long face

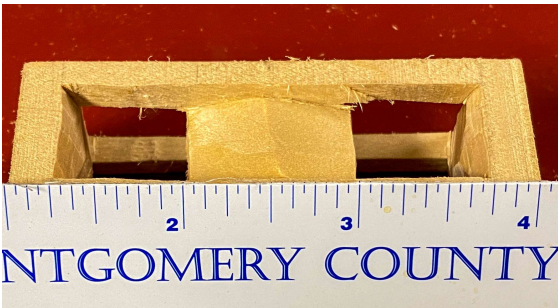


2. You want to carve away the inside of the box leaving a ball larger than the opening

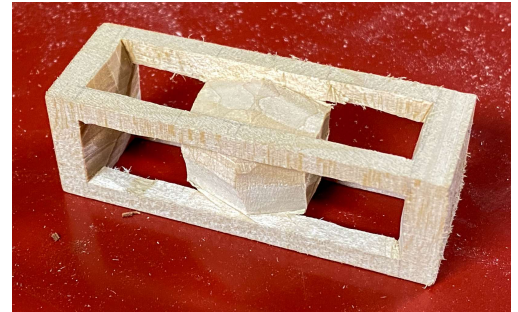


3. Draw the box on each long face, squaring off the space defined by the holes. Mark the center line across each face. Carve to extend the holes to flatten the outside edge of hole on each side.

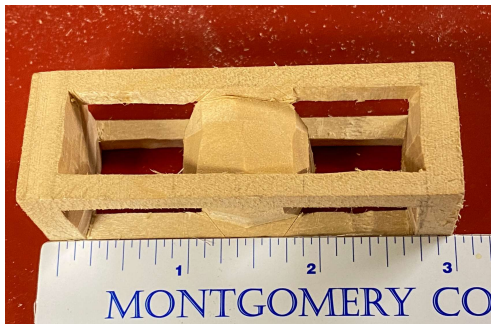
4. Do the same with the inside edge of each hole



5. You now have 3/4" square holes on all sides of a 1" square block

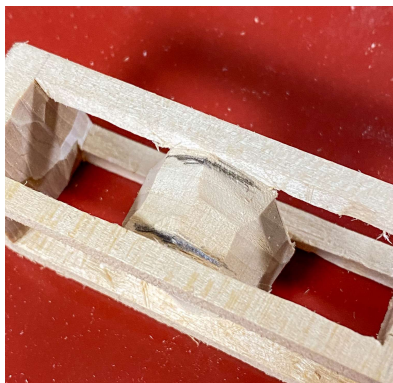
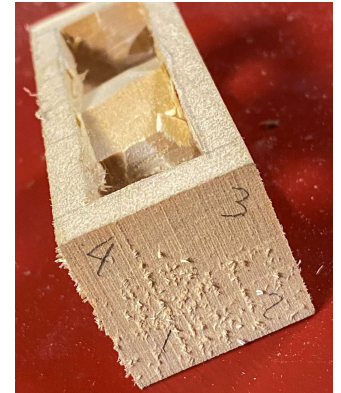


6. Start to shape the center block into the ball. Carve a straight slope from the center to each side of the block on all 4 sides



7. Continue to shape the center block into the ball by continually rounded edges.

8. It may help to label the four corners, so you continue to go in order and not over carve one side



9. As you get down to the ball. It will be held to the box by increasingly small edges (marked in pencil here). It is easier to carve the ball symmetrically before it comes free, so round the trapped ball as much as you can before separating it from the cage. Carefully free each edge with delicate cuts to avoid splitting.



10. Finish your cage and ball. You can thin the rails and/or bevel the inside of each rail to let the ball move more freely. When thinning the rails, note that it is easier to carve in one direction than another. Carve the end caps anyway you like.